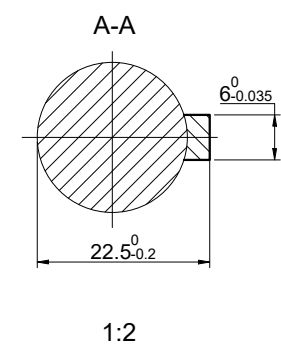
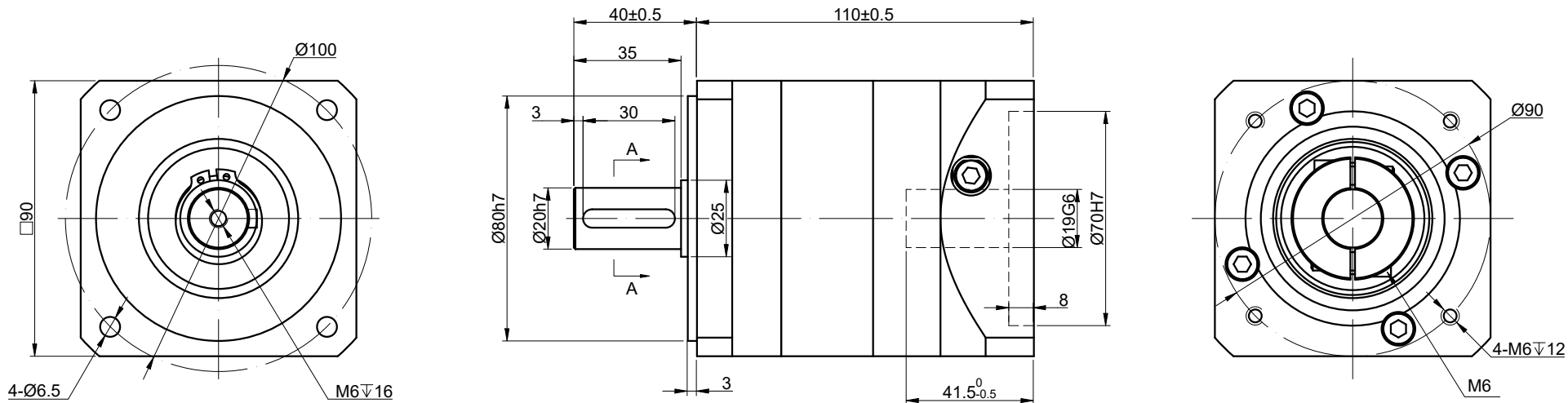


REV.	REVISION RECORD	BY	DATE
0	ORIGIN	LJ	8.4.2025



SPECIFICATION	CONNECTION	VALUE
GEAR RATIO		10
EFFICIENCY		96%
BACKLASH@NO-LOAD(arcmin)		≤ 10
MAX.PERMISSIBLE TORQUE(Nm)[lb-in]		39.00[345.18]
MOMENT PERMISSIBLE TORQUE(Nm)[lb-in]		78.00[690.36]
SHAFT MAXIMUM AXIAL LOAD(N)		800
SHAFT MAXIMUM RADIAL LOAD(N)		1000
GEARBOX MATCHING MOTOR'S INPUT SHAFT LENGTH (mm)		24~41
RATED INPUT SPEED(RPM)		3000
MAX. INPUT SPEED(RPM)		6000
NOISE(dB)		≤ 55
WATERPROOF RATING		IP54
LIFE(h)		20000
WORKING TEMPERATURE		$-20^{\circ}\text{C} \sim 150^{\circ}\text{C} [-4^{\circ}\text{F} \sim 302^{\circ}\text{F}]$

DIMENSIONS ARE IN MILLIMETERS. TOLERANCES AS BELOW: DECIMALS ANGLES X ± 0.5 $\pm 2^{\circ}$ X.X ± 0.25 X.XX ± 0.13		
THIRD ANGLE PROJECTION		
SIGNATURE		DATE
DRN	LJ	8.4.2025
APVD	MYX	8.4.2025

STEPPERONLINE®			
GEARBOX			
TG90-G10			
REV.	1	SCALE	1:2
DWG NO.	A2130		