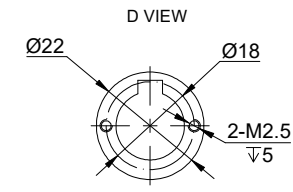
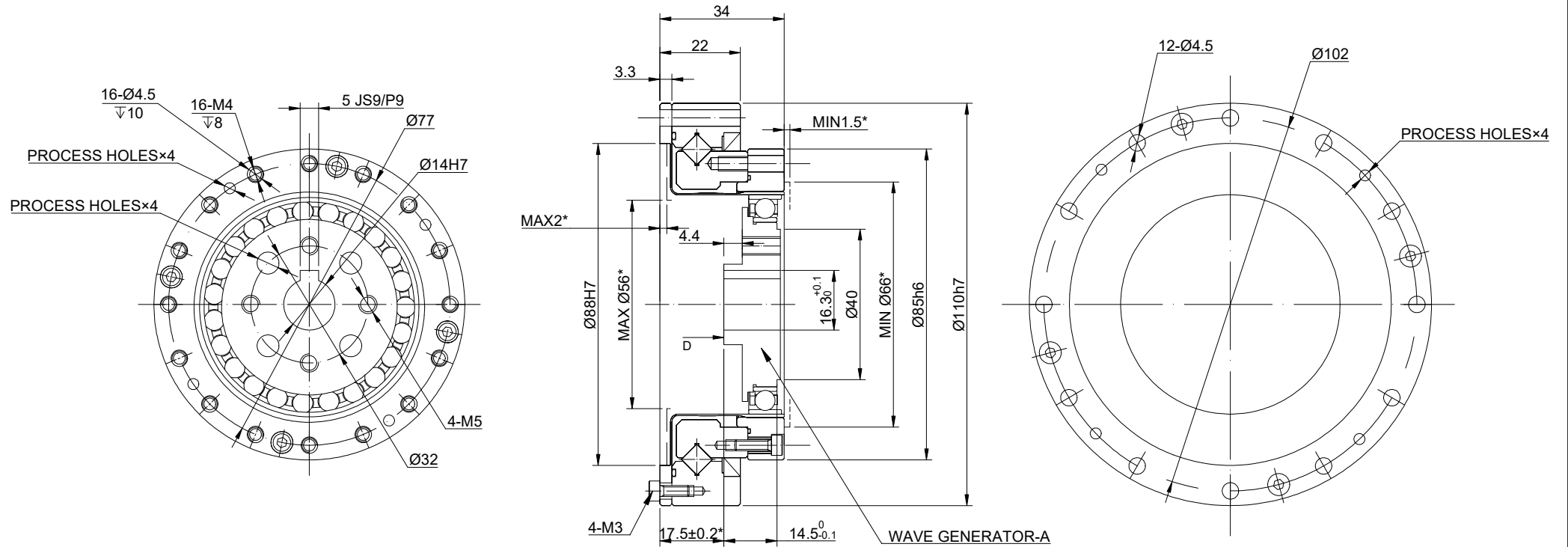


REV.	REVISION RECORD	BY	DATE
0	ORIGIN	LDJ	12.17.2025



SPECIFICATION	CONNECTION	VALUE
GEAR RATIO		50
BACKLASH@NO-LOAD(arcsec)		<=20
RATED TORQUE(INPUT SPEED 2000RPM)(Nm)[lb-in]		39.00[345.18]
MOMENT PERMISSIBLE TORQUE(Nm)[lb-in]		186.00[1646.24]
PEAK START-STOP TORQUE(Nm)[lb-in]		98.00[867.37]
MAXIMUM INPUT SPEED ALLOWED(RPM)		5600
AVERAGE INPUT SPEED ALLOWED(RPM)		3500
WEIGHT(kg)		1.22
LIFE(h)		10000
AMBIENT TEMPERATURE		0°C~40°C[32°F~104°F]

DIMENSIONS ARE IN MILLIMETERS.  
TOLERANCES AS BELOW:  
DECIMALS ANGLES  
X ±0.5 ±2°  
X.X ±0.25  
X.XX ±0.13

THIRD ANGLE PROJECTION

SIGNATURE DATE

DRN LDJ 12.23.2025

APVD ZPJ 12.23.2025

**STEPPERONLINE®**

**HARMONIC REDUCER**

**HHT-25-50-I-D14**

REV.	0	SCALE	2:3	DWG NO.	A3351
------	---	-------	-----	---------	-------