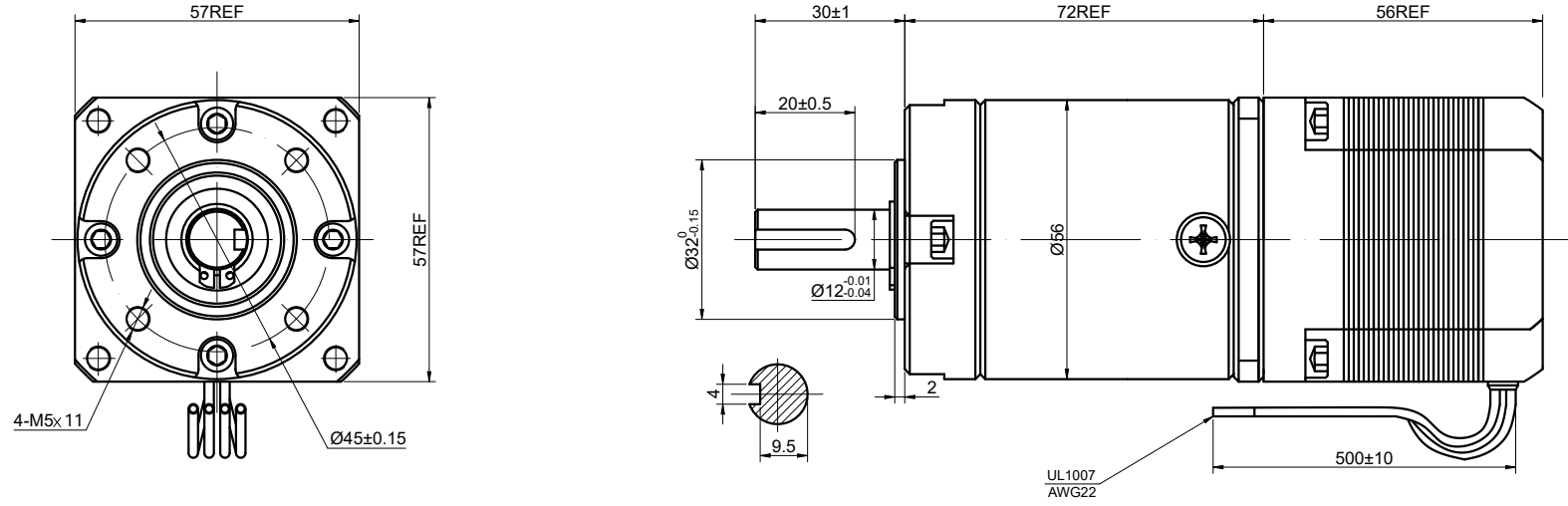


CUSTOMER'S MODEL: NO MODEL
 END COVER COLOR: GRAY

REV.	REVISION RECORD	BY	DATE
0	ORIGIN	LJ	10.14.2025



SPECIFICATION	CONNECTION	BIPOLAR
AMPS/PHASE		2.80
RESISTANCE/PHASE(Ohms)@25°C		0.90±10%
INDUCTANCE/PHASE(mH)@1KHz		2.50±20%
HOLDING TORQUE w/o GEARBOX(Nm)[lb-in]		1.25[11.06]
STEP ANGLE w/o GEARBOX(°)		1.80±5.00%
GEAR RATIO		46 ⁸² / ₁₂₅
MAX.PERMISSIBLE TORQUE(Nm)		30.00
MOMENT PERMISSIBLE TORQUE(Nm)		50.00
EFFICIENCY		70%
BACKLASH@NO-LOAD(°)		<=3°
WEIGHT(Kg)[lb]		-
AMBIENT TEMPERATURE		-10°C~50°C[14°F~122°F]
INSULATION CLASS		B 130°C[266°F]
TEMPERATURE RISE		MAX.80°C

COMMENT:
 1.MAX. AXIAL LOAD:100N
 2.MAX. RADIAL LOAD:200N
 3.TMBF 6000h OR MORE @ 24V/300RPM
 4.INSULATION RESISTANCE (NORMAL TEMPERATURE AND HUMIDITY): 100 Mohm
 5.DIELECTRIC STRENGTH 500VAC FOR 1MIN.(BETWEEN THE MOTOR COILS AND THE MOTOR CASE)

MOTOR CONNECTION			
PIN NO	BIPOLAR	LEADS	WINDING
1	A+	BLK	
2	A-	GRN	
3	B+	RED	
4	B-	BLU	

FULL STEP 2 PHASE-Ex.,WHEN FACING MOUNTING END (X)					DIMENSIONS ARE IN MILLIMETERS. TOLERANCES AS BELOW:		
STEP	A+	B+	A-	B-	CCW	DECIMALS	
1	+	+	-	-		ANGLES ±2°	
2	-	+	+	-		X ±0.5	
3	-	-	+	+		X.X ±0.25	
4	+	-	-	+		X.XX ±0.13	
						THIRD ANGLE PROJECTION	
					SIGNATURE		DATE
					DRN	LJ	10.14.2025
					APVD	LDJ	10.14.2025

STEPPERONLINE®

STEPPER MOTOR

23HS22-2804S-PG47