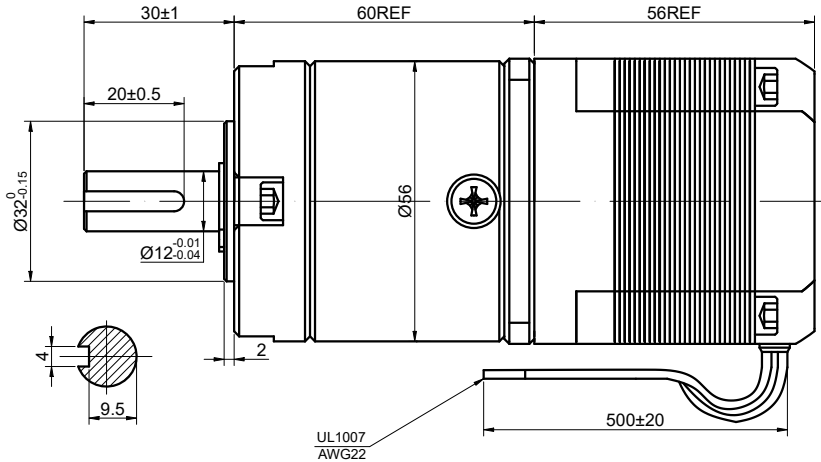
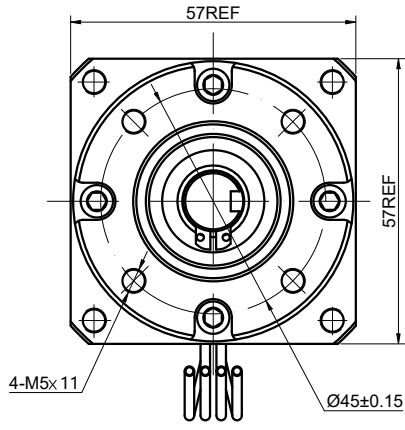


CUSTOMER'S MODEL: NO MODEL  
 END COVER COLOR: GRAY

REV.	REVISION RECORD	BY	DATE
0	ORIGIN	LJ	10.14.2025



SPECIFICATION	CONNECTION	BIPOLAR
AMPS/PHASE		2.80
RESISTANCE/PHASE(Ohms)@25°C		0.90±10%
INDUCTANCE/PHASE(mH)@1KHz		2.50±20%
HOLDING TORQUE w/o GEARBOX(Nm)[lb-in]		1.25[11.06]
STEP ANGLE w/o GEARBOX(°)		1.80±5.00%
GEAR RATIO		15 <sup>3</sup> / <sub>10</sub>
MAX.PERMISSIBLE TORQUE(Nm)		30.00
MOMENT PERMISSIBLE TORQUE(Nm)		50.00
EFFICIENCY		80%
BACKLASH@NO-LOAD(°)		<=3°
WEIGHT(Kg)[lb]		-
AMBIENT TEMPERATURE		-10°C~50°C[14°F~122°F]
INSULATION CLASS		B 130°C[266°F]
TEMPERATURE RISE		MAX.80°C

COMMENT:  
 1.MAX. AXIAL LOAD:100N  
 2.MAX. RADIAL LOAD:200N  
 3.TMBF 6000h OR MORE @ 24V/300RPM  
 4.INSULATION RESISTANCE (NORMAL TEMPERATURE AND HUMIDITY): 100 Mohm  
 5.DIELECTRIC STRENGTH 500VAC FOR 1MIN.(BETWEEN THE MOTOR COILS AND THE MOTOR CASE )

MOTOR CONNECTION			
PIN NO	BIPOLAR	LEADS	WINDING
1	A+	BLK	
2	A-	GRN	
3	B+	RED	
4	B-	BLU	

FULL STEP 2 PHASE-Ex.,WHEN FACING MOUNTING END (X)					DIMENSIONS ARE IN MILLIMETERS.	
STEP	A+	B+	A-	B-	CCW	TOLERANCES AS BELOW:
1	+	+	-	-		DECIMALS
2	-	+	+	-		X ±0.5
3	-	-	+	+		X.X ±0.25
4	+	-	-	+		X.XX ±0.13
					THIRD ANGLE PROJECTION	ANGLES ±2°

**STEPPERONLINE®**

STEPPER MOTOR

23HS22-2804S-PG15

THIS DOCUMENT SHALL NOT BE REPRODUCED NOR SHALL THE INFORMATION CONTAINED HEREIN BE USED BY OR DISCLOSED TO OTHERS UNLESS EXPRESSLY AUTHORIZED IN BY WRITING STEPPERONLINE.		SIGNATURE	DATE
DRN	LJ		10.14.2025
APVD	LDJ		10.14.2025