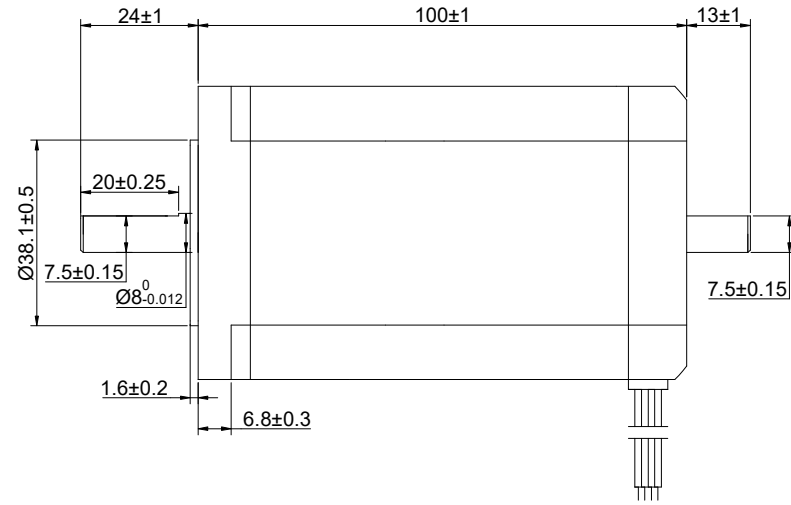
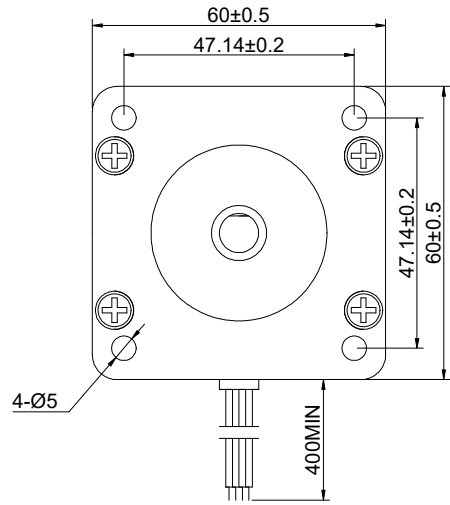


CUSTOMER'S MODEL: NO MODEL
 END COVER COLOR: BLACK

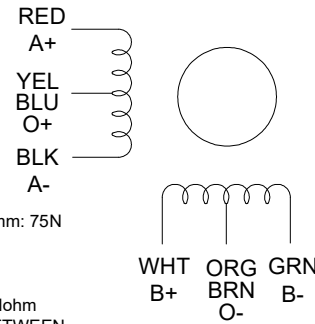
| REV. | REVISION RECORD | BY | DATE |
|------|-----------------|-----|-----------|
| 0 | ORIGIN | YSX | 7.30.2025 |



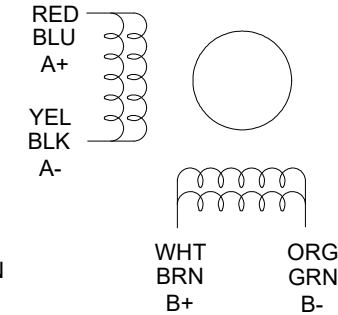
STEPPER MOTOR
 24HS39-3008D
 S/N: XXXXXXXXXXXXX



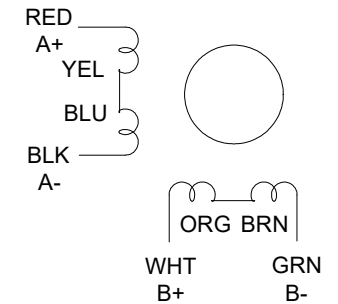
UNIPOLAR



BIPOLAR PARALLEL



BIPOLAR SERIES



| SPECIFICATION | UNIPOLAR | BIPOLAR (SERIAL) | BIPOLAR (PARALLEL) |
|-----------------------------|------------------------|------------------|--------------------|
| AMPS/PHASE | 2.80 | 2.00 | 4.00 |
| RESISTANCE/PHASE(Ohms)@25°C | 1.40±10% | 2.80±10% | 0.70±10% |
| INDUCTANCE/PHASE(mH)@1KHz | 3.00±20% | 12.00±20% | 3.00±20% |
| HOLDING TORQUE(Nm)[lb-in] | 2.48[21.97] | 3.40[30.12] | 3.40[30.12] |
| STEP ANGLE(°) | 1.80 | | |
| STEP ACCURACY(NON-ACCUM) | ±5.00% | | |
| ROTOR INERTIA(g-cm²) | 980.0 | | |
| WEIGHT(Kg)[lb] | — | | |
| AMBIENT TEMPERATURE | -10°C~50°C[14°F~122°F] | | |
| INSULATION CLASS | B 130°C[266°F] | | |
| TEMPERATURE RISE | MAX.80°C | | |

COMMENT:
 1.DYNAMIC AXIAL LOAD: 15N MAX
 2.DYNAMIC RADIAL LOAD @ SHAFT LENGTH 20mm: 75N MAX
 3.TMBF 6000h OR MORE @ 24V/300RPM
 4.INSULATION RESISTANCE (NORMAL TEMPERATURE AND HUMIDITY): 100 Mohm
 5.DIELECTRIC STRENGTH 500VAC FOR 1MIN.(BETWEEN THE MOTOR COILS AND THE MOTOR CASE)

| STEP | A+ | B+ | A- | B- |
|------|----|----|----|----|
| 1 | + | + | - | - |
| 2 | - | + | + | - |
| 3 | - | - | + | + |
| 4 | + | - | - | + |

FULL STEP 2 PHASE-Ex.,WHEN FACING MOUNTING END (X)
 DIMENSIONS ARE IN MILLIMETERS.
 TOLERANCES AS BELOW:
 DECIMALS ANGLES
 X ±0.5 ±2°
 X.X ±0.25
 X.XX ±0.13
 THIRD ANGLE PROJECTION

STEPPERONLINE®

STEPPER MOTOR

24HS39-3008D

THIS DOCUMENT SHALL NOT BE REPRODUCED NOR SHALL THE INFORMATION CONTAINED HEREIN BE USED BY OR DISCLOSED TO OTHERS UNLESS EXPRESSLY AUTHORIZED IN BY WRITING STEPPERONLINE.

| SIGNATURE | | DATE |
|-----------|-----|-----------|
| DRN | YSX | 7.30.2025 |
| APVD | LJ | 7.30.2025 |

| | | | | | |
|------|---|-------|-----|---------|-------|
| REV. | 0 | SCALE | 2:3 | DWG NO. | A1411 |
|------|---|-------|-----|---------|-------|