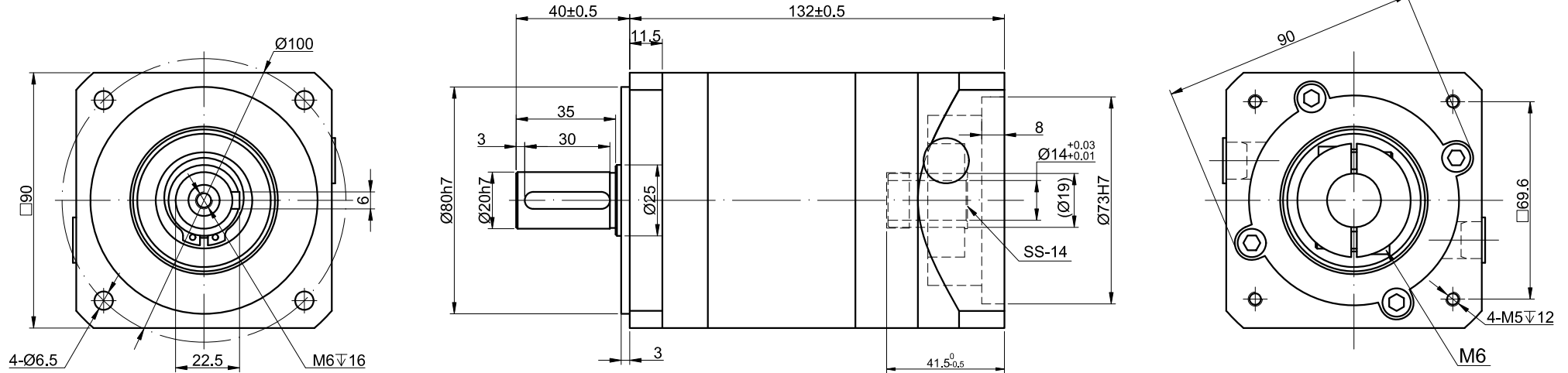


REV.	REVISION RECORD	BY	DATE
0	ORIGIN	ZPJ	7.5.2023



SPECIFICATION	CONNECTION	VALUE
GEAR RATIO		50
EFFICIENCY		94%
BACKLASH@NO-LOAD(arcmin)		<=20
MAX.PERMISSIBLE TORQUE(Nm)[lb-in]		100.00[885.07]
MOMENT PERMISSIBLE TORQUE(Nm)[lb-in]		200.00[1770.15]
SHAFT MAXIMUM AXIAL LOAD(N)		800
SHAFT MAXIMUM RADIAL LOAD(N)		1000
GEARBOX MATCHING MOTOR'S INPUT SHAFT LENGTH (mm)		30~40
RATED INPUT SPEED(RPM)		3000
MAX. INPUT SPEED(RPM)		6000
NOISE(dB)		<=55
WATERPROOF RATING		IP54
LIFE(h)		20000
WORKING TEMPERATURE		-20°C~150°C[-4°F~302°F]

NOTE:
 BY DEFAULT, GEAR BOX COMES WITH SS-14 SHAFT SLEEVE, IF YOU NEED Ø12.7mm INPUT HOLE, PLEASE PURCHASE SS-13 SEPARATELY.

DIMENSIONS ARE IN MILLIMETERS.
 TOLERANCES AS BELOW:
 DECIMALS ANGLES
 X ±0.5 ±2°
 X.X ±0.25
 X.XX ±0.13

THIRD ANGLE PROJECTION		
SIGNATURE		DATE
DRN	ZPJ	7.5.2023
APVD	YSX	7.5.2023

STEPPERONLINE®

PLANETARY GEARBOX

EG34-G50

REV.	0	SCALE	1:2	DWG NO.	A1798
------	---	-------	-----	---------	-------