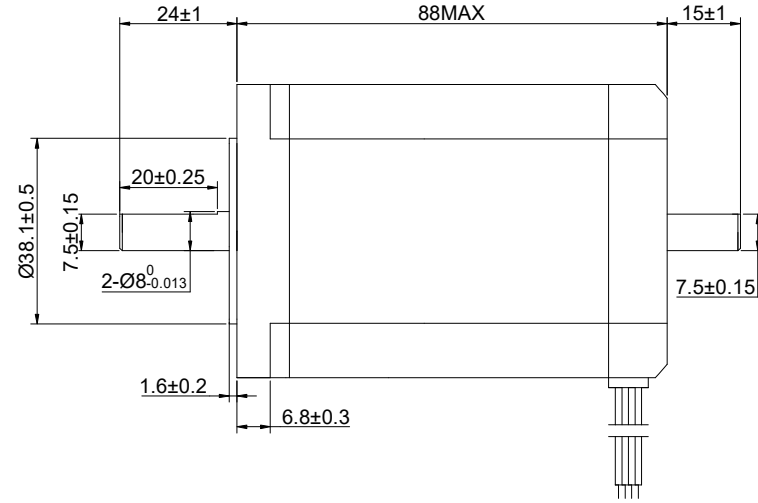
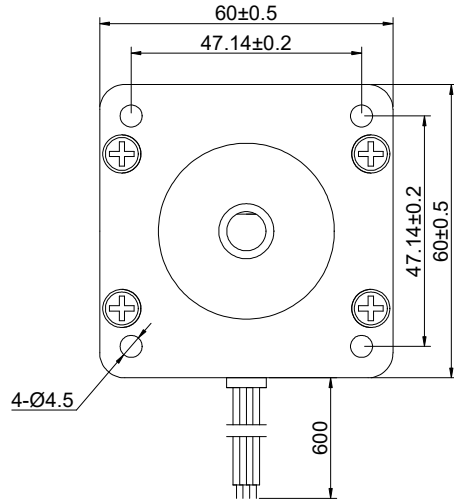


CUSTOMER'S MODEL: NO MODEL
 END COVER COLOR: BLACK

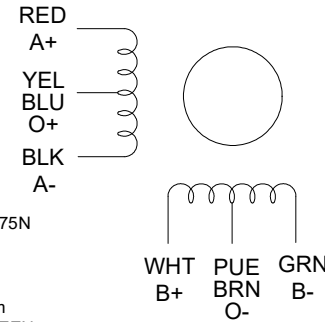
REV.	REVISION RECORD	BY	DATE
0	ORIGIN	YSX	7.30.2025



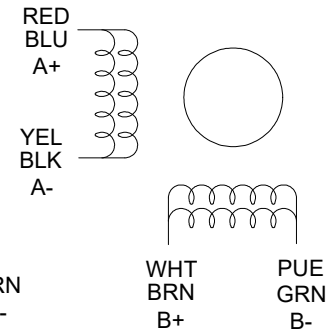
STEPPER MOTOR
 24HS34-3008D
 S/N: XXXXXXXXXXXXX



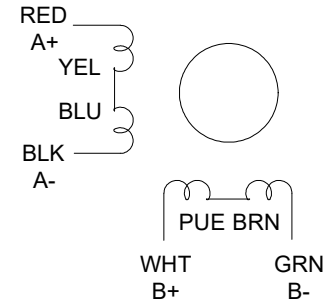
UNIPOLAR



BIPOLAR PARALLEL



BIPOLAR SERIES



SPECIFICATION	UNIPOLAR	BIPOLAR (SERIAL)	BIPOLAR (PARALLEL)
AMPS/PHASE	3.00	2.10	4.20
RESISTANCE/PHASE(Ohms)@25°C	1.30±10%	2.60±10%	0.65±10%
INDUCTANCE/PHASE(mH)@1KHz	3.20±20%	12.80±20%	3.20±20%
HOLDING TORQUE(Nm)[lb-in]	2.20[19.47]	3.10[27.44]	3.10[27.44]
STEP ANGLE(°)	1.80		
STEP ACCURACY(NON-ACCUM)	±5.00%		
ROTOR INERTIA(g-cm²)	840.00		
WEIGHT(Kg)[lb]	—		
AMBIENT TEMPERATURE	-10°C~50°C[14°F~122°F]		
INSULATION CLASS	B 130°C[266°F]		
TEMPERATURE RISE	MAX.80°C		

COMMENT:
 1.DYNAMIC AXIAL LOAD: 15N MAX
 2.DYNAMIC RADIAL LOAD @ SHAFT LENGTH 20mm: 75N MAX
 3.TMBF 6000h OR MORE @ 24V/300RPM
 4.INSULATION RESISTANCE (NORMAL TEMPERATURE AND HUMIDITY): 100 Mohm
 5.DIELECTRIC STRENGTH 500VAC FOR 1MIN.(BETWEEN THE MOTOR COILS AND THE MOTOR CASE)

FULL STEP 2 PHASE-Ex.,WHEN FACING MOUNTING END (X)

STEP	A+	B+	A-	B-
1	+	+	-	-
2	-	+	+	-
3	-	-	+	+
4	+	-	-	+

DIMENSIONS ARE IN MILLIMETERS.
 TOLERANCES AS BELOW:
 DECIMALS ANGLES
 X ±0.5 ±2°
 X.X ±0.25
 X.XX ±0.13



THIS DOCUMENT SHALL NOT BE REPRODUCED NOR SHALL THE INFORMATION CONTAINED HEREIN BE USED BY OR DISCLOSED TO OTHERS UNLESS EXPRESSLY AUTHORIZED IN BY WRITING STEPPERONLINE.

SIGNATURE		DATE
DRN	YSX	7.30.2025
APVD	LJ	7.30.2025

STEPPERONLINE®

STEPPER MOTOR

24HS34-3008D

REV.	0	SCALE	2:3	DWG NO.	A1400
------	---	-------	-----	---------	-------