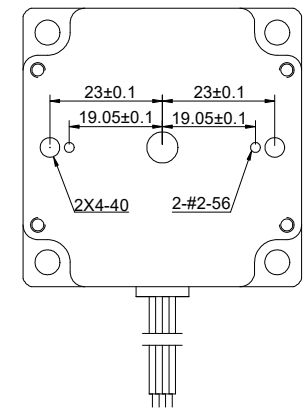
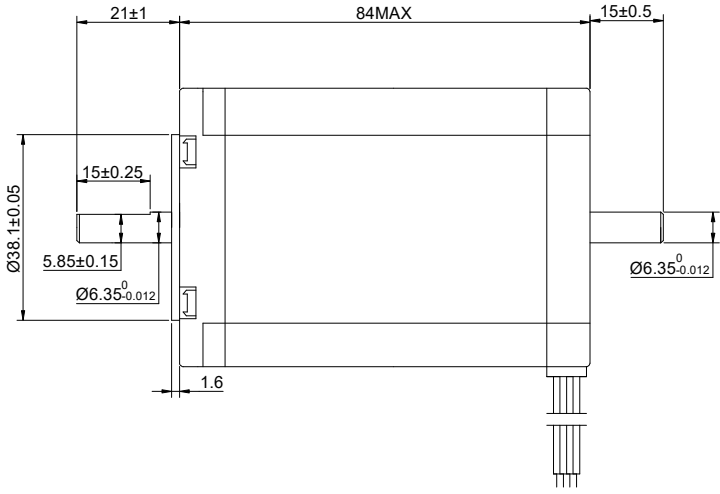
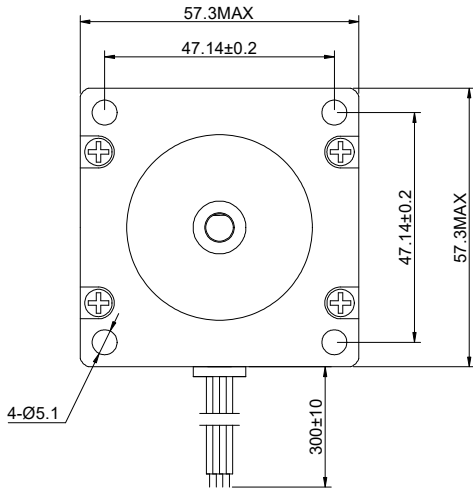


CUSTOMER'S MODEL: NO MODEL  
END COVER COLOR: GRAY

REV.	REVISION RECORD	BY	DATE
0	ORIGIN	YSX	7.30.2025



STEPPER MOTOR  
23HS33-4008D  
S/N: XXXXXXXXXXXXX



SPECIFICATION	UNIPOLAR	BIPOLAR (SERIAL)	BIPOLAR (PARALLEL)
AMPS/PHASE	4.00	2.83	5.66
RESISTANCE/PHASE(Ohms)@25°C	0.80±10%	1.60±10%	0.40±10%
INDUCTANCE/PHASE(mH)@1KHz	1.80±20%	7.20±20%	1.80±20%
HOLDING TORQUE(Nm)[lb-in]	2.00[17.70]	2.83[25.05]	2.83[25.05]
STEP ANGLE(°)	1.80		
STEP ACCURACY(NON-ACCUM)	±5.00%		
ROTOR INERTIA(g-cm²)	530.00		
WEIGHT(Kg)[lb]	—		
AMBIENT TEMPERATURE	-10°C~50°C[14°F~122°F]		
INSULATION CLASS	B 130°C[266°F]		
TEMPERATURE RISE	MAX.80°C		

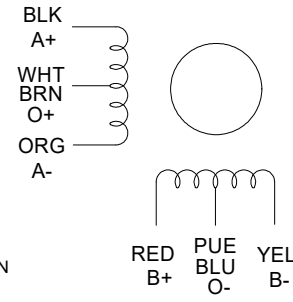
COMMENT:  
1.TMBF 6000h OR MORE @ 24V/300RPM  
2.INSULATION RESISTANCE (NORMAL TEMPERATURE AND HUMIDITY): 100 Mohm  
3.DIELECTRIC STRENGTH 500VAC FOR 1MIN.(BETWEEN THE MOTOR COILS AND THE MOTOR CASE )

FULL STEP 2 PHASE-Ex.,WHEN FACING MOUNTING END (X)					CCW
STEP	A+	B+	A-	B-	
1	+	+	-	-	↓ ↑ CW
2	-	+	+	-	
3	-	-	+	+	
4	+	-	-	+	

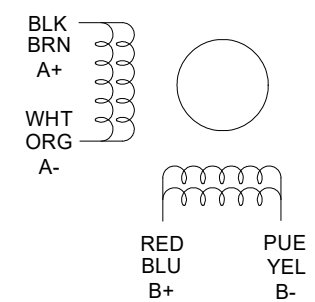
DIMENSIONS ARE IN MILLIMETERS.  
TOLERANCES AS BELOW:  
DECIMALS ANGLES  
X ±0.5 ±2°  
X.X ±0.25  
X.XX ±0.13

SIGNATURE DATE  
DRN YSX 7.30.2025  
APVD LJ 7.30.2025

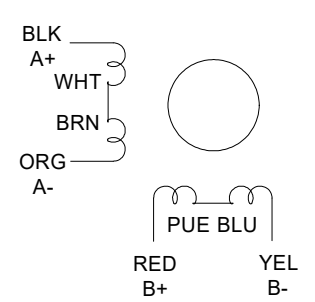
UNIPOLAR



BIPOLAR PARALLEL



BIPOLAR SERIES



**STEPPERONLINE®**

STEPPER MOTOR

23HS33-4008D