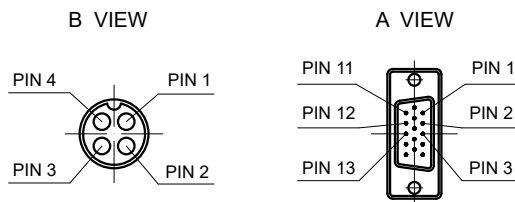
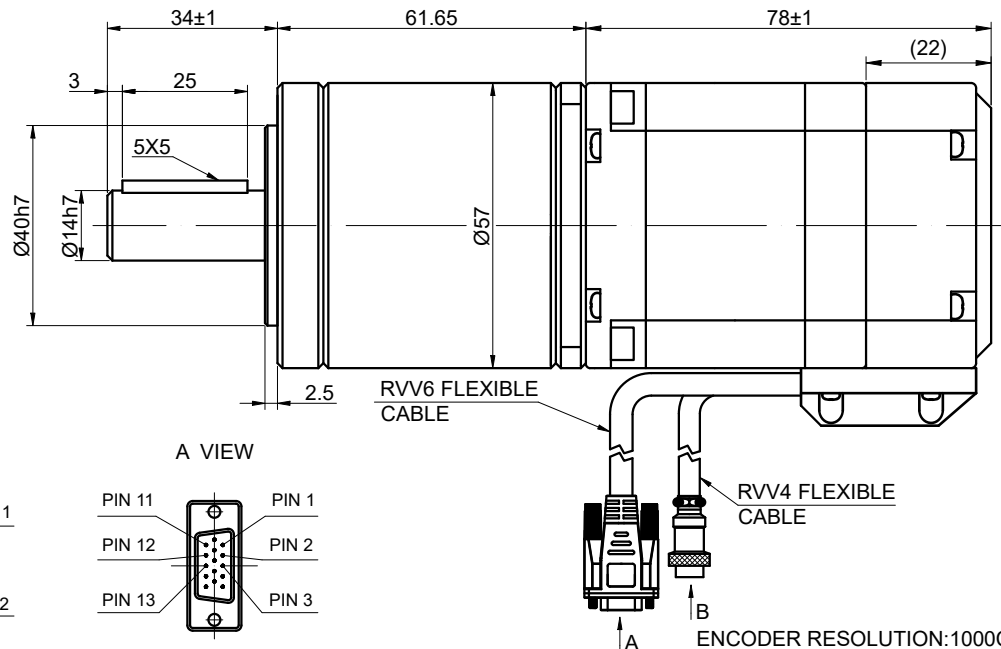
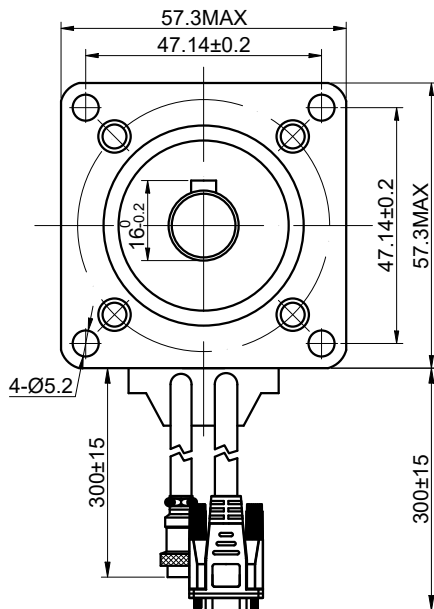


CUSTOMER'S MODEL: NO MODEL  
END COVER COLOR: BLK

REV.	REVISION RECORD	BY	DATE
0	ORIGIN	ZPJ	12.15.2025



ENCODER RESOLUTION: 1000CPR

15-PIN DB MALE PLUG	1	2	3	11	12	13
DESCRIPTION	EA+	VCC	GND	EB+	EB-	EA-

MOTOR CONNECTION			
PIN NO	BIPOLAR	LEADS	WINDING
1	A+	-	
2	A-	-	
3	B+	-	
4	B-	-	



COMMENT:  
 1.DYNAMIC AXIAL LOAD:100N MAX  
 2.DYNAMIC RADIAL LOAD @ SHAFT LENGTH 20mm: 200N MAX  
 3.TMBF 6000h OR MORE @ 24V/300RPM  
 4.INSULATION RESISTANCE (NORMAL TEMPERATURE AND HUMIDITY): 100 Mohm  
 5.DIELECTRIC STRENGTH 500VAC FOR 1MIN.(BETWEEN THE MOTOR COILS AND THE MOTOR CASE )

SPECIFICATION	CONNECTION	BIPOLAR
AMPS/PHASE		4.00
RESISTANCE/PHASE(Ohms)@25°C		0.50±10%
INDUCTANCE/PHASE(mH)@1KHz		1.70±20%
HOLDING TORQUE w/o GEARBOX(Nm)[lb-in]		1.20[10.63]
STEP ANGLE w/o GEARBOX(°)		1.80
GEAR RATIO		50
GEAR EFFICIENCY		75.00%
BACKLASH@NO-LOAD(arcmin)		≤96
MAX.PERMISSIBLE TORQUE(Nm)		20.00
MOMENT PERMISSIBLE TORQUE(Nm)		40.00
AMBIENT TEMPERATURE		-10°C~50°C[14°F~122°F]
INSULATION CLASS		B 130°C[266°F]
TEMPERATURE RISE		MAX.80°C

FULL STEP 2 PHASE-Ex.,WHEN FACING MOUNTING END (X)						DIMENSIONS ARE IN MILLIMETERS.	
STEP	A+	B+	A-	B-	CCW	DECIMALS	ANGLES
1	+	+	-	-		X ±0.5	±2°
2	-	+	+	-		X.X ±0.25	
3	-	-	+	+		X.XX ±0.13	
4	+	-	-	+			

THIS DOCUMENT SHALL NOT BE REPRODUCED NOR SHALL THE INFORMATION CONTAINED HEREIN BE USED BY OR DISCLOSED TO OTHERS UNLESS EXPRESSLY AUTHORIZED IN BY WRITING STEPPERONLINE.

SIGNATURE		DATE
DRN	ZPJ	12.15.2025
APVD	YSX	12.15.2025

**STEPPERONLINE®**

**STEPPER MOTOR**

**23HS22-HG50-E1000**

REV.	0	SCALE	1:1	DWG NO.	A3865
------	---	-------	-----	---------	-------