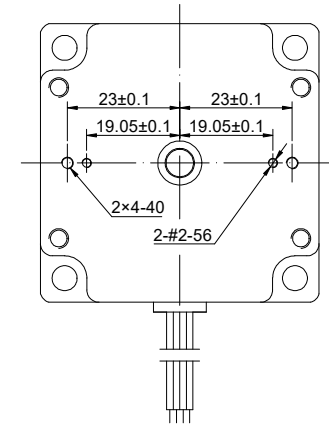
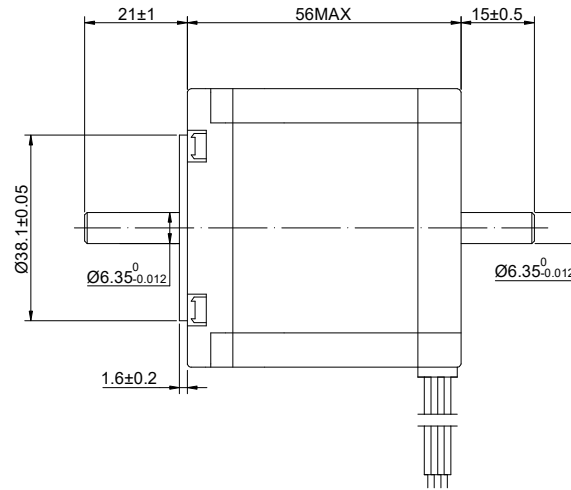
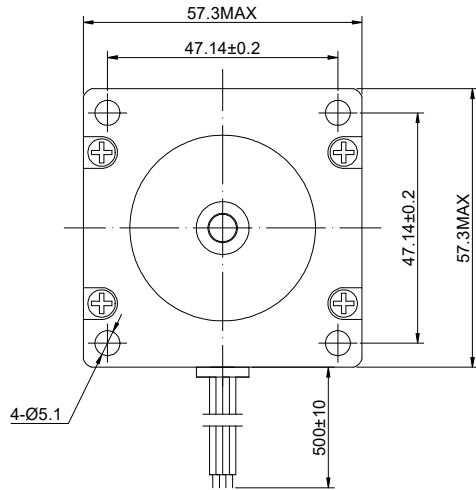


CUSTOMER'S MODEL: NO MODEL
 END COVER COLOR: GRAY

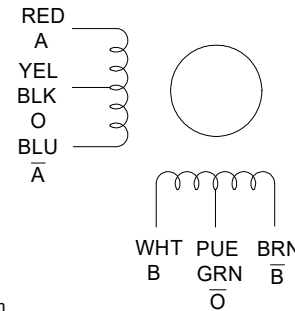
REV.	REVISION RECORD	BY	DATE
0	ORIGIN	MYX	8.1.2025



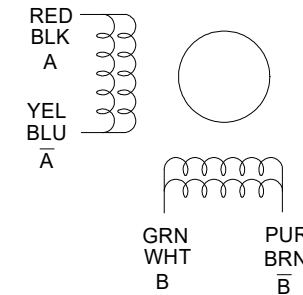
STEPPER MOTOR
 23HS22-3008D
 S/N: XXXXXXXXXXXXXXX



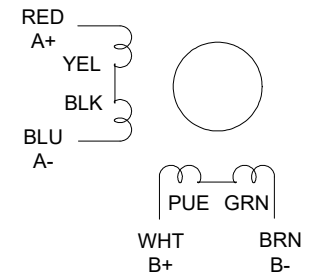
UNIPOLAR



BIPOLAR PARALLEL



BIPOLAR SERIES



SPECIFICATION	UNIPOLAR	BIPOLAR (SERIAL)	BIPOLAR (PARALLEL)
AMPS/PHASE	3.00	2.12	4.24
RESISTANCE/PHASE(Ohms)@25°C	0.75±10%	1.50±10%	0.38±10%
INDUCTANCE/PHASE(mH)@1KHz	1.10±20%	4.40±20%	1.10±20%
HOLDING TORQUE(Nm)[lb-in]	0.90[7.97]	1.26[11.15]	1.26[11.15]

COMMENT:
 1.TMBF 6000h OR MORE @ 24V/300RPM
 2.INSULATION RESISTANCE (NORMAL TEMPERATURE AND HUMIDITY): 100 Mohm
 3.DIELECTRIC STRENGTH 500VAC FOR 1MIN.(BETWEEN THE MOTOR COILS AND THE MOTOR CASE)

STEP ANGLE(°)	1.80
STEP ACCURACY(NON-ACCUM)	±5.00%
ROTOR INERTIA(g-cm²)	300.00
WEIGHT(Kg)[lb]	—
AMBIENT TEMPERATURE	-10°C~50°C[14°F~122°F]
INSULATION CLASS	B 130°C[266°F]
TEMPERATURE RISE	MAX.80°C

STEP	A+	B+	A-	B-
1	+	+	-	-
2	-	+	+	-
3	-	-	+	+
4	+	-	-	+

FULL STEP 2 PHASE-Ex.,WHEN FACING MOUNTING END (X)
 DIMENSIONS ARE IN MILLIMETERS.
 TOLERANCES AS BELOW:
 DECIMALS ANGLES
 X ±0.5 ±2°
 X.X ±0.25
 X.XX ±0.13
 THIRD ANGLE PROJECTION

STEPPERONLINE®

STEPPER MOTOR

23HS22-3008D

REV.	0	SCALE	2:3	DWG NO.	A1184
------	---	-------	-----	---------	-------

SIGNATURE		DATE
DRN	MYX	8.1.2025
APVD	ZPJ	8.1.2025