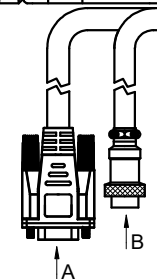
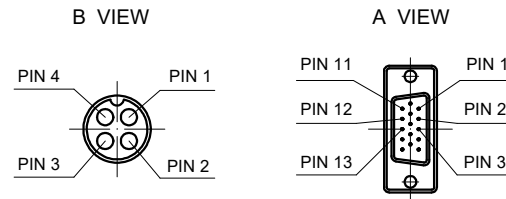
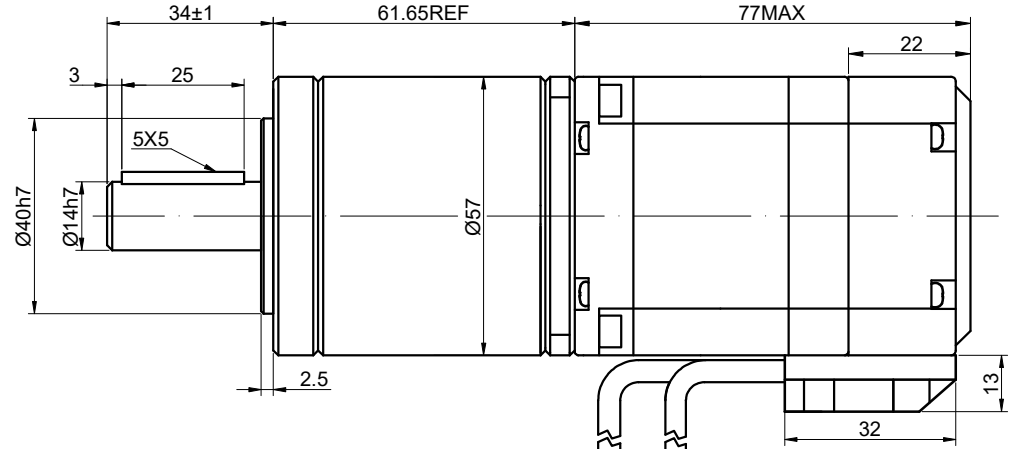
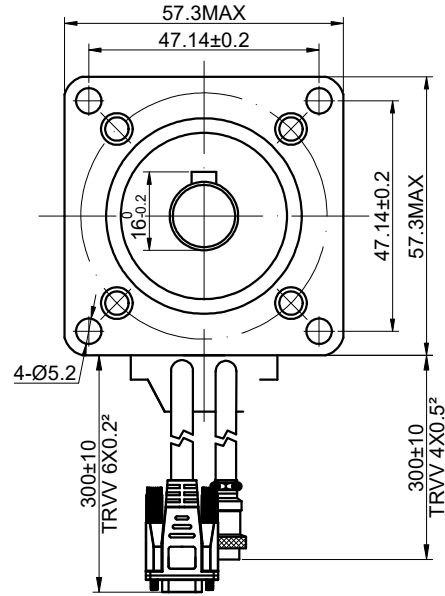


CUSTOMER'S MODEL: NO MODEL
 END COVER COLOR: BLACK

REV.	REVISION RECORD	BY	DATE
0	ORIGIN	HW	6.13.2024



MOTOR CONNECTION		
GX16 PIN NO	BIPOLAR	WINDING
1	A+	
2	A-	
3	B+	
4	B-	

SPECIFICATION	CONNECTION	BIPOLAR
AMPS/PHASE		4.00
RESISTANCE/PHASE(Ohms)@25°C		0.45±10%
INDUCTANCE/PHASE(mH)@1KHz		1.30±20%
HOLDING TORQUE w/o GEARBOX(Nm)[lb-in]		1.20[10.62]
STEP ANGLE w/o GEARBOX(°)		1.80±5.00%
GEAR RATIO		15
MAX.PERMISSIBLE TORQUE(Nm)		20.00
MOMENT PERMISSIBLE TORQUE(Nm)		40.00
EFFICIENCY		85%
BACKLASH@NO-LOAD(arcmin)		<=50
LIFE(h)		6000
AMBIENT TEMPERATURE		-10°C~50°C[14°F~122°F]
INSULATION CLASS		B 130°C[266°F]
TEMPERATURE RISE		MAX.80°C

COMMENT:
 1.TMBF 6000h OR MORE @ 24V/300RPM
 2.INSULATION RESISTANCE (NORMAL TEMPERATURE AND HUMIDITY): 100 Mohm
 3.DIELECTRIC STRENGTH 500VAC FOR 1MIN.
 (BETWEEN THE MOTOR COILS AND THE MOTOR CASE)

ENCODER RESOLUTION:1000PPR(4000CPR)						
15-PIN DB MALE PLUG	1	2	3	11	12	13
DESCRIPTION	EA+	VCC	GND	EB+	EB-	EA-

FULL STEP 2 PHASE-Ex.,WHEN FACING MOUNTING END (X)						DIMENSIONS ARE IN MILLIMETERS.	
STEP	A+	B+	A-	B-	CCW	TOLERANCES AS BELOW:	ANGLES
1	+	+	-	-		DECIMALS	±2°
2	-	+	+	-		X ±0.5	
3	-	-	+	+		X.X ±0.25	
4	+	-	-	+		X.XX ±0.13	
						THIRD ANGLE PROJECTION	

THIS DOCUMENT SHALL NOT BE REPRODUCED NOR SHALL THE INFORMATION CONTAINED HEREIN BE USED BY OR DISCLOSED TO OTHERS UNLESS EXPRESSLY AUTHORIZED IN BY WRITING STEPPERONLINE.		SIGNATURE	DATE
DRN	HW	6.13.2024	
APVD	LDJ	6.13.2024	

STEPPERONLINE®

STEPPER MOTOR

23HS22-HG15-E1000

REV.	0	SCALE	2:3	DWG NO.	A1194
------	---	-------	-----	---------	-------