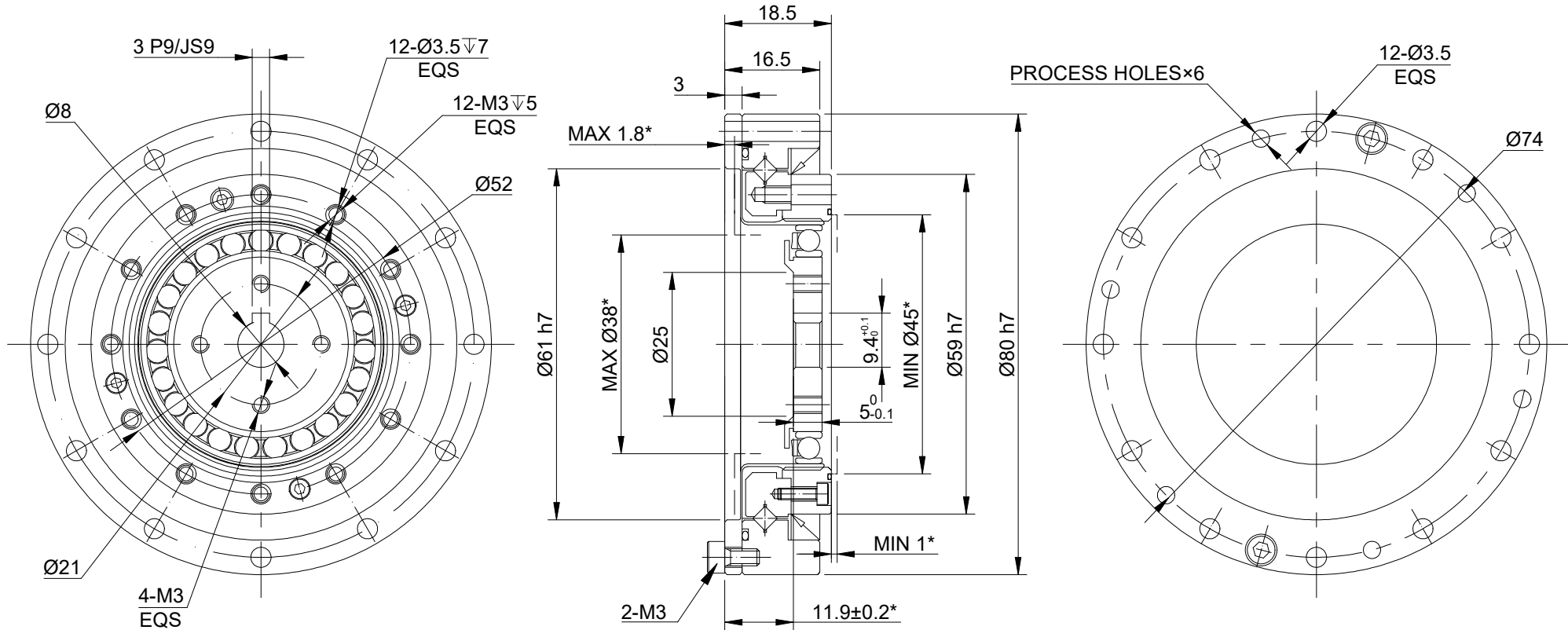


REV.	REVISION RECORD	BY	DATE
0	ORIGIN	LDJ	12.16.2025



SPECIFICATION	CONNECTION	VALUE
GEAR RATIO		100
BACKLASH@NO-LOAD(arcsec)		<=20
RATED TORQUE(INPUT SPEED 2000RPM)(Nm)[lb-in]		16.00[141.61]
MOMENT PERMISSIBLE TORQUE(Nm)[lb-in]		71.00[628.4]
PEAK START-STOP TORQUE(Nm)[lb-in]		37.00[327.48]
MAXIMUM INPUT SPEED ALLOWED(RPM)		7300
AVERAGE INPUT SPEED ALLOWED(RPM)		3500
WEIGHT(kg)		0.42
LIFE(h)		10000
AMBIENT TEMPERATURE		0°C~40°C[32°F~104°F]

DIMENSIONS ARE IN MILLIMETERS.
TOLERANCES AS BELOW:

DECIMALS	ANGLES
X ±0.5	±2°
X.X ±0.25	
X.XX ±0.13	

THIRD ANGLE PROJECTION	
SIGNATURE	DATE
DRN	LDJ
APVD	ZPJ
	12.16.2025
	12.23.2025

STEPPERONLINE®

HARMONIC REDUCER

HHD-17-100-I-D8

REV.	0	SCALE	1:1	DWG NO.	A3325
------	---	-------	-----	---------	-------