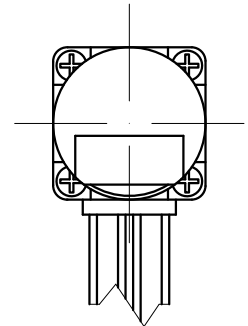
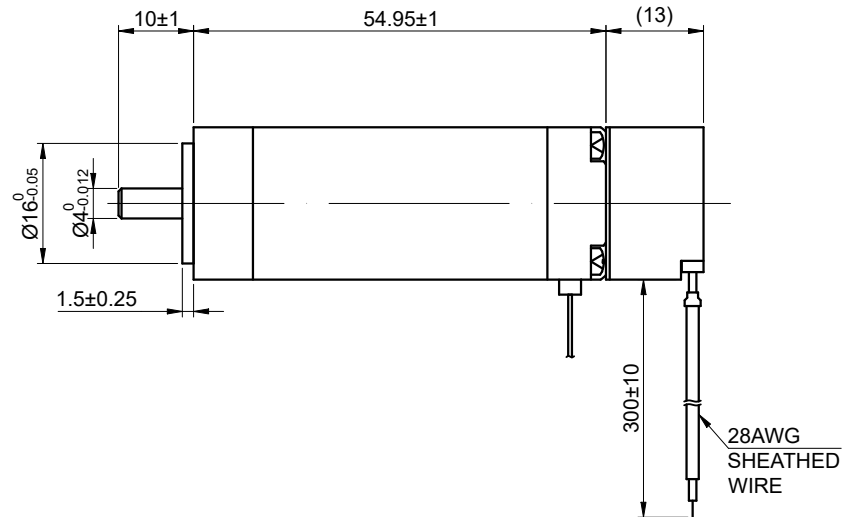
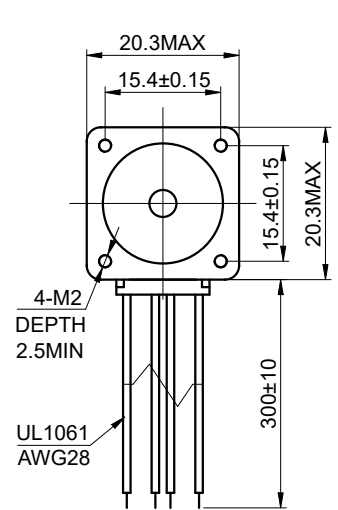


REV.	REVISION RECORD	BY	DATE
0	ORIGIN	MYX	7.14.2025

CUSTOMER'S MODEL: NO MODEL
END COVER COLOR: BLACK



MOTOR CONNECTION			
PIN NO	BIPOLAR	LEADS	WINDING
1	A+	BLK	
2	A-	GRN	
3	B+	RED	
4	B-	BLU	

CONNECTION	BIPOLAR
SPECIFICATION	
AMPS/PHASE	0.80
RESISTANCE/PHASE(Ohms)@25°C	8.50±10%
INDUCTANCE/PHASE(mH)@1KHz	4.40±20%
HOLDING TORQUE(Nm)[lb-in]	0.054 [0.48]
STEP ANGLE(°)	1.8
STEP ACCURACY(NON-ACCUM)	±5.00%
ROTOR INERTIA(g-cm ²)	—
WEIGHT(Kg)[lb]	—
AMBIENT TEMPERATURE	0°C~50°C[32°F~122°F]
INSULATION CLASS	B 130°C[266°F]
TEMPERATURE RISE	MAX.80°C

COMMENT:
1.TMBF 6000h OR MORE @ 24V/300RPM
2.INSULATION RESISTANCE (NORMAL TEMPERATURE AND HUMIDITY): 100 Mohm
3.DIELECTRIC STRENGTH 500VAC FOR 1MIN.(BETWEEN THE MOTOR COILS AND THE MOTOR CASE)

ENCODER RESOLUTION:1000PPR(4000CPR)									
LEAD COLOR	BLK	RED	WHT	ORG	GRY	YEL	GRN	BLU	SHIELD
DESCRIPTION	EA+	VCC	GND	EZ+	EZ-	EB+	EB-	EA-	NC

FULL STEP 2 PHASE-Ex.,WHEN FACING MOUNTING END (X)						CCW	↑	DIMENSIONS ARE IN MILLIMETERS. TOLERANCES AS BELOW: DECIMALS ANGLES X ±0.5 ±2° X.X ±0.25 X.XX ±0.13
STEP	A+	B+	A-	B-				
1	+	+	-	-				
2	-	+	+	-				
3	-	-	+	+				
4	+	-	-	+	CW			

STEPPERONLINE®

STEPPER MOTOR

SIGNATURE		DATE
DRN	MYX	7.14.2025
APVD	LJ	7.14.2025

8HS22-0804D-E1000			
REV.	0	SCALE	1:1
DWG NO.	A1749		