

# Test Report

Report No.: U01605200814606ER1

Query Password: QW4822

Date: Aug. 24, 2020

Page 1 of 8

**Applicant:** OMC CORPORATION LIMITED**Contact information:** #7 Zhongke Road, Jiangning District, Nanjing City, 211100 China**The following sample(s) was (were) submitted and identified by client as:**

Sample Name : Stepper Motor  
Model No. : 17HS19-2004S1  
Series Model : Nema 6, Nema 8, Nema 11, Nema 14, Nema 16, Nema 17, Nema 23, Nema 24, Nema 34, Nema 42, Nema 52  
Trade mark : STEPPERONLINE  
Sample Received Date : Aug. 14, 2020  
Testing Period : From Aug. 14, 2020 to Aug. 20, 2020  
Test Request : Please refer to next page(s).  
Test Result(s) : Please refer to next page(s).

Signed for and on behalf of Shen Zhen UONE Test Co., LTD.

Prepared by



Marcia Deng

Checked by



Nora Deng

Approved by



Levent Liang

This report is valid only with a valid digital signature. The digital signature may be available only under the Adobe software above version 7.0.

# Test Report

Report No.: U01605200814606ER1

Query Password: QW4822

Date: Aug. 24, 2020

Page 2 of 8

---

**Summary of test results:****TEST REQUEST**

RoHS Directive 2011/65/EU and its subsequent amendments &amp; Directive (EU) 2015/863

To determine Lead (Pb), Cadmium(Cd), Mercury(Hg), Hexavalent Chromium(Cr(VI)),

(1) Polybrominated Biphenyls (PBBs) and Polybrominated DiphenylEthers (PBDEs)  
content by screening test and chemical test

(2) To determine Phthalates (DBP, BBP, DEHP, DIBP) content by chemical test

**CONCLUSION****PASS****PASS**

---

This report is valid only with a valid digital signature. The digital signature may be available only under the Adobe software above version 7.0.

# Test Report

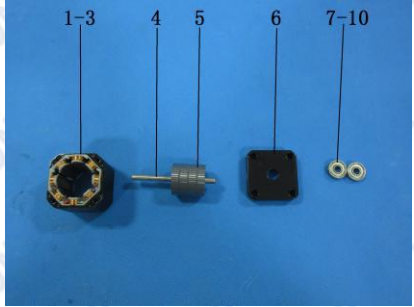
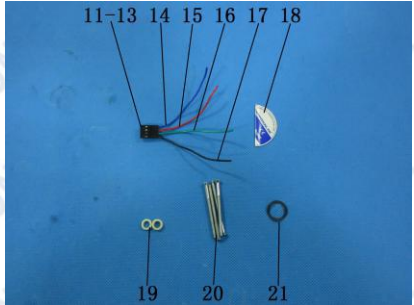
Report No.: U01605200814606ER1

Query Password: QW4822

Date: Aug. 24, 2020

Page 3 of 8

### Test Material List

Material No.	Description (Location)	Photo(s) of tested materials
1	Metal (housing) coated with black	
2	Copper metal (coil)	
3	Beige plastic case	
4	Silver metal shaft	
5	Silver metal (magnet)	
6	Metal cover with black coating	
7	Silver metal (bearing)	
8	Silver metal cover	
9	Silver metal (fixed frame)	
10	Silver metal (ball)	
11	Black plastic (terminal case)	
12	Silver metal (pin)	
13	Silver metal (wire)	
14	Blue plastic (cable)	
15	Red plastic (cable)	
16	Green plastic (cable)	
17	Black plastic (cable)	
18	The silver label	
19	White plastic (gasket)	
20	Silver metal (screw)	
21	Black coated metal (gasket)	

This report is valid only with a valid digital signature. The digital signature may be available only under the Adobe software above version 7.0.

# Test Report

Report No.: U01605200814606ER1

Query Password: QW4822 Date: Aug. 24, 2020

Page 4 of 8

## Test Result(s):

(1) Lead (Pb), Cadmium(Cd), Mercury(Hg), Hexavalent Chromium(Cr(VI)), Polybrominated Biphenyls (PBBs) and Polybrominated DiphenylEthers (PBDEs)

Test Method: IEC62321-3-1: 2013, IEC62321-4: 2013+A1:2017, IEC62321-5: 2013, IEC62321-6: 2015, IEC 62321-7-1:2015, IEC 62321-7-2: 2017, analyzed by EDXRF & ICP-OES & GC-MS & UV-Vis.

No.	EDXRF Result <sup>(1)</sup>					Chemical Result <sup>(2)</sup> (mg/kg)	Remark <sup>(3)</sup>	Conclusion
	Pb	Cd	Hg	Cr	Br			
1	BL	BL	BL	BL	NA	—	—	PASS
2	BL	BL	BL	BL	NA	—	—	PASS
3	BL	BL	BL	BL	BL	—	—	PASS
4	BL	BL	BL	BL	NA	—	—	PASS
5	BL	BL	BL	BL	NA	—	—	PASS
6	BL	BL	BL	BL	NA	—	—	PASS
7	BL	BL	BL	BL	NA	—	—	PASS
8	BL	BL	BL	BL	NA	—	—	PASS
9	BL	BL	BL	BL	NA	—	—	PASS
10	BL	BL	BL	BL	NA	—	—	PASS
11	BL	BL	BL	BL	BL	—	—	PASS
12	BL	BL	BL	BL	NA	—	—	PASS
13	BL	BL	BL	BL	NA	—	—	PASS
14	BL	BL	BL	BL	BL	—	—	PASS
15	BL	BL	BL	BL	BL	—	—	PASS
16	BL	BL	BL	BL	BL	—	—	PASS
17	BL	BL	BL	BL	BL	—	—	PASS
18	BL	BL	BL	BL	BL	—	—	PASS
19	BL	BL	BL	BL	BL	—	—	PASS
20	BL	BL	BL	BL	NA	—	—	PASS
21	BL	BL	BL	BL	NA	—	—	PASS

This report is valid only with a valid digital signature. The digital signature may be available only under the Adobe software above version 7.0.

# Test Report

Report No.: U01605200814606ER1

Query Password: QW4822 Date: Aug. 24, 2020

Page 5 of 8

## Remark:

- (1) ① Results are obtained by EDXRF for primary screening, and further wet chemical testing by ICP-OES (for Cd, Pb, Hg), UV-VIS (for Cr(VI)) and GC/MS (for PBBs, PBDEs) is recommended to be performed, if an inconclusive result was found (as "X" in below table) (unit: mg/kg).
- ② OL = Over Limit, BL = Below Limit, X = Inconclusive, NA = Not Applicable.
- ③ The EDXRF screening test for RoHS elements – The reading may be different to the actual content in the sample be of non-uniformity composition.

Element	Polymer	Metal	Composite Materials
Cd	$BL \leq (70-3\sigma) < X < (130+3\sigma) \leq OL$	$BL \leq (70-3\sigma) < X < (130+3\sigma) \leq OL$	$LOD < X < (150+3\sigma) \leq OL$
Pb	$BL \leq (700-3\sigma) < X < (1300+3\sigma) \leq OL$	$BL \leq (700-3\sigma) < X < (1300+3\sigma) \leq OL$	$BL \leq (500-3\sigma) < X < (1500+3\sigma) \leq OL$
Hg	$BL \leq (700-3\sigma) < X < (1300+3\sigma) \leq OL$	$BL \leq (700-3\sigma) < X < (1300+3\sigma) \leq OL$	$BL \leq (500-3\sigma) < X < (1500+3\sigma) \leq OL$
Br	$BL \leq (300-3\sigma) < X$	NA	$BL \leq (250-3\sigma) < X$
Cr	$BL \leq (700-3\sigma) < X$	$BL \leq (700-3\sigma) < X$	$BL \leq (500-3\sigma) < X$

## Units and limits in EU RoHS Directive 2011/65/EU:

Element	Pb	Cd	Hg	Cr(VI)	PBBs(single)	PBDEs(single)
Unit	mg/kg	mg/kg	mg/kg	mg/kg	mg/kg	mg/kg
Limit	1000	100	1000	1000	1000	1000

- (2) ① mg/kg = ppm = 0.0001%, N.D. = Not Detected (Less than RL).

② Unit and RL (Report limit) in wet chemical test.

Element	Pb	Cd	Hg	Cr(VI)	PBBs(single)	PBDEs(single)
Unit	mg/kg	mg/kg	mg/kg	mg/kg	mg/kg	mg/kg
RL	2	2	2	2	5	5

③ According to IEC 62321-7-1:2015, result on Cr(VI) for metal sample is shown as Positive/Negative.

Negative = Absence of Cr(VI) coating, Positive = Presence of Cr(VI) coating.

Storage condition and production date of the tested sample are unavailable and thus results of Cr(VI) represent status of the sample at the time of testing.

④ According to IEC 62321-3-1:2013, this column represents the results of wet chem test.

- (3) This column represents the exempted decoration of material or other related testing sample's information.

This report is valid only with a valid digital signature. The digital signature may be available only under the Adobe software above version 7.0.

# Test Report

Report No.: U01605200814606ER1

Query Password: QW4822 Date: Aug. 24, 2020

Page 6 of 8

## (2) Phthalates (DBP, BBP, DEHP, DIBP) content

Test Method: IEC 62321-8: 2017, analyzed by gas chromatographic- mass spectrometer (GC-MS).

Substances	DBP	BBP	DEHP	DIBP	Conclusion
CAS No.	84-74-2	85-68-7	117-81-7	84-69-5	
Limit (mg/kg)	1000	1000	1000	1000	
RL (mg/kg)	30	30	30	30	
Material No.	Result (mg/kg)				
3	N.D.	N.D.	N.D.	N.D.	PASS
11	N.D.	N.D.	N.D.	N.D.	PASS
14	N.D.	N.D.	N.D.	N.D.	PASS
15	N.D.	N.D.	N.D.	N.D.	PASS
16	N.D.	N.D.	N.D.	N.D.	PASS
17	N.D.	N.D.	N.D.	N.D.	PASS
18	N.D.	N.D.	N.D.	N.D.	PASS
19	N.D.	N.D.	N.D.	N.D.	PASS

- Note:**
1. mg/kg = milligram per kilogram (ppm).
  2. RL = report limit.
  3. N.D.=not detected(less than RL).

This report is valid only with a valid digital signature. The digital signature may be available only under the Adobe software above version 7.0.

# Test Report

Report No.: U01605200814606ER1

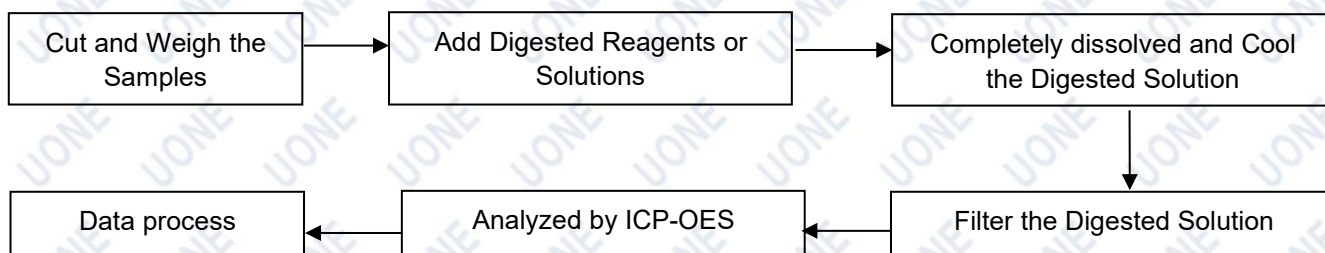
Query Password: QW4822

Date: Aug. 24, 2020

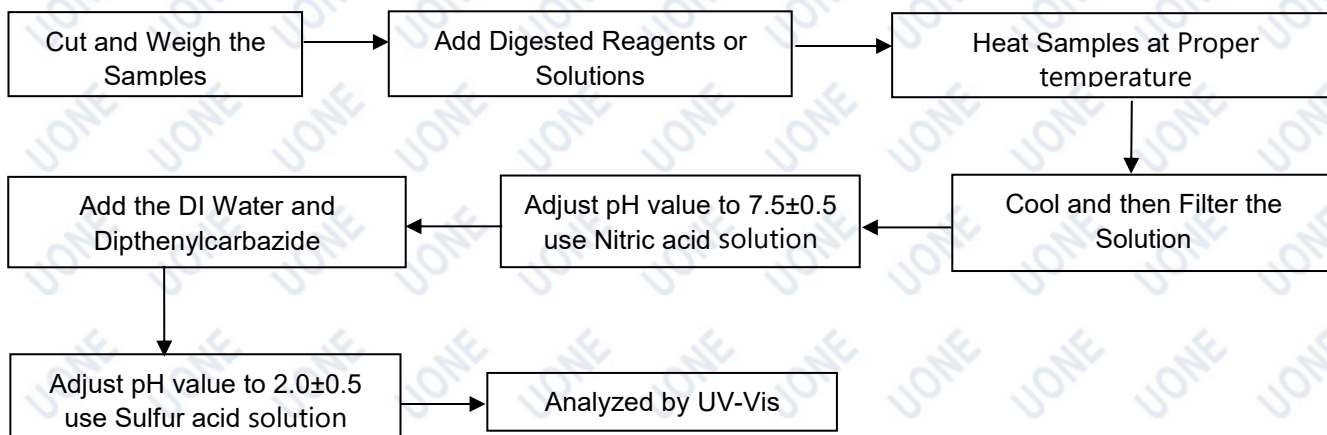
Page 7 of 8

## Test Process Flow

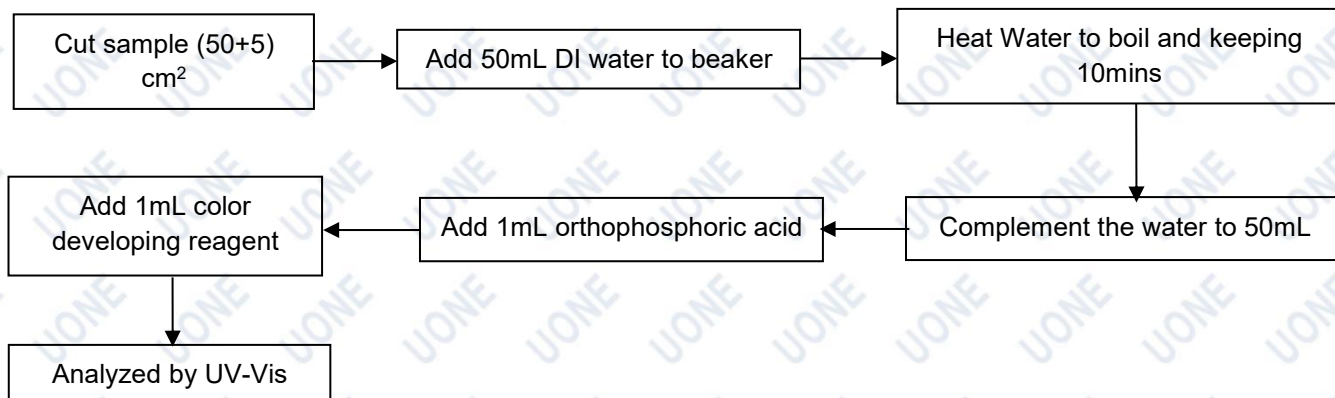
### 1. Lead, Cadmium, Mercury



### 2. Hexavalent Chromium (Non-metal)



### Hexavalent Chromium (Metal)



This report is valid only with a valid digital signature. The digital signature may be available only under the Adobe software above version 7.0.

# Test Report

Report No.: U01605200814606ER1

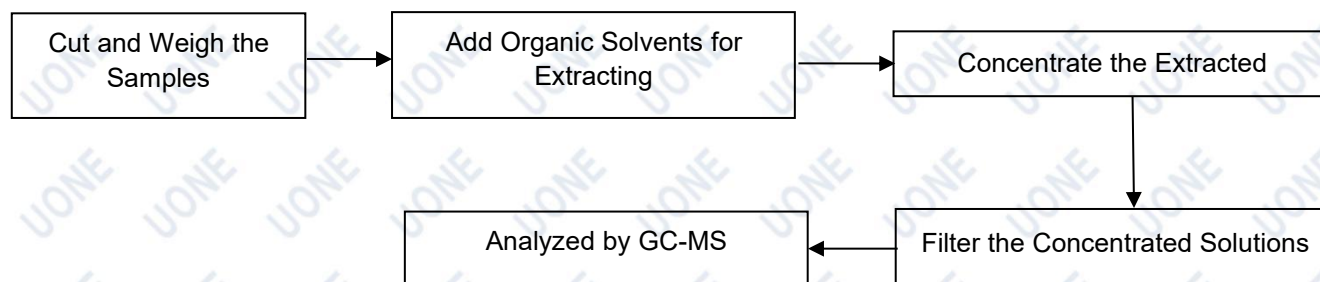
Query Password: QW4822

Date: Aug. 24, 2020

Page 8 of 8

## Test Process Flow (Continued):

### 3. PBBs & PBDEs, Phthalates



Remark: This report replaces the report whose report No. is U01605200814606E. The original report No. is U01605200814606E will be automatically nullified on the date of issuance of this report.

## Photo(s) of Sample:



\*\*\*End of Report\*\*\*

This report is considered invalidated without the Special Seal for Inspection of the UONE, This report shall not be altered, increased or deleted. The results shown in this test report refer only to the sample tested. Without written approval of UONE, this report shall not be copied and published as advertisement.

This report is valid only with a valid digital signature. The digital signature may be available only under the Adobe software above version 7.0.